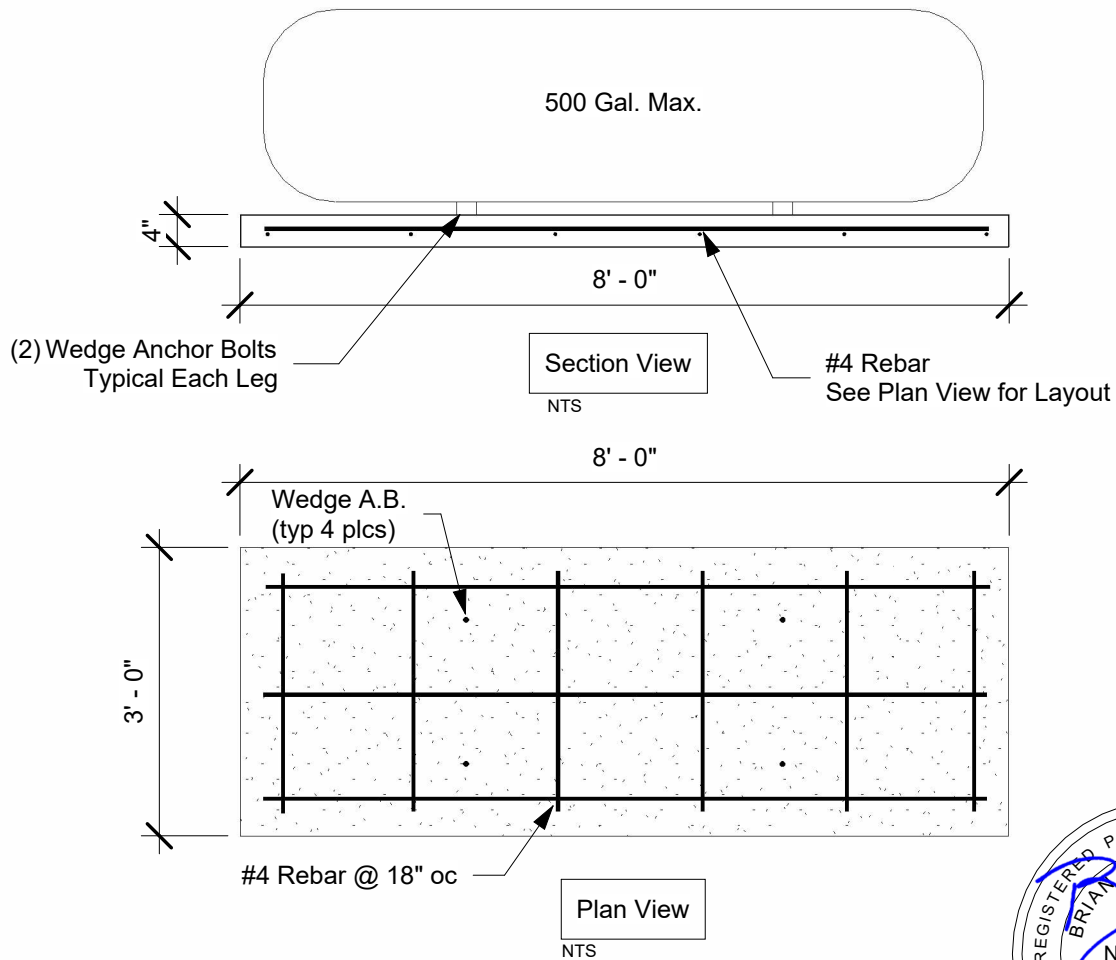


# HILFIKER PRECAST SLAB

(For Propane Tanks)

Capable of Supporting Propane Tanks up to 500 Gallons

## HILFIKER SLAB DETAILS



### Design Parameters

1. Max. Propane Tank Size - 500 Gallon (5000 lb. Limit).
2. Tank Slab to be Placed on Level, Competant Natural Grade or Compacted Agg. Base.
3. Wedge Anchors - (4)  $\frac{3}{8}$ "  $\varnothing$  Power-Stud HD5, Hot-Dipped Galvanized, hnom 2.375" Required. (or equal)
4. Anchor Bolts Must be 6" from Edge of Slab.
5. Concrete  $f_c = 4000$  PSI. (min.)
6. Reinforcing Steel Grade 40,  $f_y = 40$ ksi. (min.)
7. All work to be in compliance with 2022 CBC.

**O&A**  
**ONTIVEROS & ASSOCIATES**  
INC  
CONSULTING ENGINEERS AND SURVEYORS

404 N. Fortuna Blvd.  
Fortuna, CA 95540  
(707) 725-7410  
Ontiveros.Assoc@att.net